

Kato Concentrates

First impressions:

Has that Kato Clay plastic doll smell, which gets stronger as the clay gets warmer. Is hard to condition - crumbly - must warm thoroughly before putting through pasta machine.

The blue bleeds immediately - to hands, blade, pasta machine and work surface. Clean your hands immediately after working with it to avoid contaminating other colors.

Mixing Kato Concentrates with themselves (no Premo)

1. 1 Red to 1 Yellow = Lighter Red



2. 1 Red to 1 Blue = Dark Purple, almost black



3. 1 Blue to 1 Yellow = Dark Blue-green





4. 1 Blue to 1 Yellow to 1 Red = Black
(looks like Premo black - is actually a dark purple while Premo black is a dark brown)

Mixing Kato Concentrates with Premo clay.

5. 4 Pearl to 1 Red



For comparison, Premo Pearl Red



6. 4 Pearl to 1 Blue



For comparison, Premo Pearl Blue



7. 4 Pearl to 1 Yellow



8. 4 Pearl to 1 Black (color 4)



At 4-1 ratio all colors Mica shift well.

9. 2 Pearl to 1 Red



For comparison, Premo Pearl Red



10. 2 Pearl to 1 Blue



For comparison, Premo Pearl Blue

11. 2 Pearl to 1 Yellow



12. 2 Pearl to 1 Black (color 4)



At 2-1 ratio all colors Mica shift well.

13. 1 Pearl to 1 Red



For comparison, Premo Pearl Red



14. 1 Pearl to 1 Blue



For comparison, Premo Pearl Blue



15. 1 Pearl to 1 Yellow





16. 1 Pearl to 1 Black (color 4)

At 1-1 ratio all colors Mica shift well.



29. 2 Blue to 1 Pearl



For comparison, Premo Pearl Blue



30. 2 Red to 1 Pearl



For comparison, Premo Pearl Red

31. 2 Yellow to 1 Pearl



At 2-1 ratio all colors Mica shift well.

17. 4 Pearl to 1 Red to 1 Blue



18. 4 Pearl to 1 Yellow to 1 Red



For comparison, Premo Pearl Red



19. 4 Pearl to 1 Blue to 1 Yellow



For comparison, Premo Pearl Green

These 3 mixes Mica Shift well.

~~~~~

The next 6 colors were rolled to the thinnest setting (#9) on my pasta machine and then placed on a slice of quickie black and white checkerboard cane. This was then run through the pasta machine to setting #4 (medium).

20. 16 Translucent to 1 Yellow



21. 16 Translucent to 1 Red

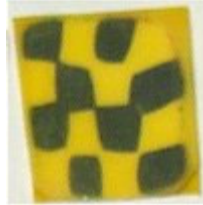


22. 16 Translucent to 1 Blue





40. 4 Translucent to 1 Yellow



41. 4 Translucent to 1 Red



42. 4 Translucent to 1 Blue



Small amounts of Kato Concentrates mixed with translucent produces darker colors that are still translucent.

~~~~~

23. 16 Pearl to 3 Yellow to 1 Red



For comparison, Premo Pearl Red



24. 16 Pearl to 2 Red to 1 Blue



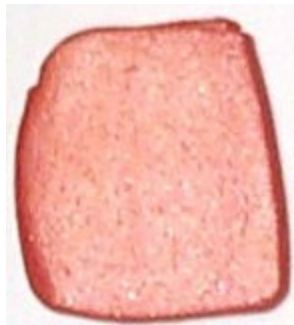
25. 16 Pearl to 3 Yellow to 1 Blue



For comparison, Premo Pearl Green



26. 16 Pearl to 8 Yellow to 1 Red



27. 16 Pearl to 2 Blue to 1 Red



For comparison, Premo Pearl Blue



28. 16 Pearl to 8 Yellow to 1 Blue



For comparison, Premo Pearl Green

32. 4 Gold to 1 Yellow



33. 4 Gold to 1 Red

This one looks coppery. For comparison here's a sample of Premo Copper



34. 4 Gold to 1 Blue



35. 4 Silver to 1 Yellow



36. 4 Silver to 1 Red



37. 4 Silver to 1 Blue



38. 1 Pearl Blue to 1 Blue



For comparison, Premo Pearl Blue



39. 1 Pearl Red to 1 Red



For comparison, Premo Pearl Red



~~~~~